

BRUSSELS SCALEX CLUB

Technical rules GT3 24H BSC 2018

Update 1.6 (30/08/2018)



Summary

BODY	2
Exceptions	2
CHASSIS	3
Châssis 3DP	3
Exceptions	3
MOTOR MOUNT AND BUSHINGS	3
SUSPENSION	4
MOTOR	4
CROWN AND PINION	4
FRONT WHEEL-AXLE UNIT	4
REAR WHEEL-AXLE UNIT	4
Exceptions	4
PICKUP, BRAIDS AND WIRES	5
LIGHTING	5
SPARE PARTS	5

Brand	Chassis (Shapeways)	Cars	Min. weight of the body (with lighting and without screws)	Ballast	Magnet
Scalextric	Slot.it	Aston Martin GT3	21,7	Yes	No
	Slot.it	Audi R8 GT3	24,0		
	Slot.it	BMW Z4 GT3*	20,5		
	Prospeed / Slot.it	Mercedes AMG GT3	23,0		
	Slot.it	Porsche 991 RSR*	21,4		

* PCR chassis available and authorized

Everything that is not explicitly allowed on the present technical rules is forbidden, unless exceptionally allowed by the race direction.

The race direction reserves the right to modify the technical rules up to two weeks before the start of the race.

This technical rules are developed by the Brussels Scalex Club for the North Trophy 2018.
New models/cars will only be homologated with a favorable advise of the technical commission of the race.

BODY

- The body may be painted with a plain coat of painting on the whole surface..The inside of the body cannot be painted. Original livery's are authorized.
- The team's name must be present on the rear wing of the car.
- All glasses (cockpit, lights) must remain transparent. **Unless they are opaque of origins** (Super Resistant range)
- Lexan cockpit in 3D (with driver) and painted (at least the whole driver) at the same place as the original cockpit. The lexan must be painted as he will be completely opaque.
- The body cannot be modified and shrinking of material is forbidden, except the following points:
 - The antenna and the wipers can be removed.
 - The side mirrors must be removed.
 - It is allowed to reinforce the screws pylons of the body with a very thin tube in light material or with resin or glue.
 - The rear wing attachments and the lower part of the rear wing can be reinforced.
 - The bulbs of the headlights must be present and not drilled.
- It is allowed to replace the original rear wing with a 3DP rear wing
(Porsche and Audi : complete rear wing – Aston Martin : rear wing supports byNational Racer 3d ; Mercedes AMG : complete rear wingby Prospeed).
- The screws of the bodies are free..No spacers.
- The possible ballast (thickness: max 2 mm; glue and base included) must be placed flat on the underside of the front hood.
- The body can be unscrewed.
- It is allowed to cut out the upper side of the cockpit glasses.



Exceptions

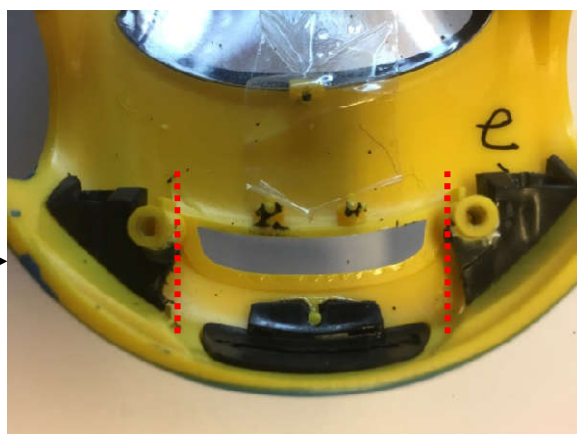
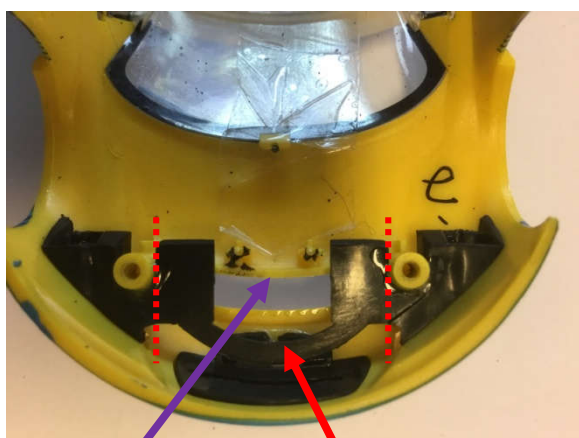
It is allowed to remove the bushings maintains of the Aston martin.

The Audi R8 has the heaviest body. It is allowed to remove some parts of the body:

It is permitted to remove the “ventilation” element from the front hood. (1)

It is allowed to cut the plastic tab that connects the headlights.(2)

It is also allowed to sand the bodywork to reach the minimum allowed weight.



1

2

CHASSIS

- Chassis 3DP Shapeways or PCR (Porsche 991 RSR and BMW Z4). (see board below)
- The lower surface of the chassis, the motor mount and the motor must be on the same plane, with a maximum deviation of 0.3 mm.
- It is allowed to cover the holes of the body's screws with a small adhesive tape.
- The M2 screws are allowed to adjust the height of the front axle.
- The locking lid must be present on the chassis.



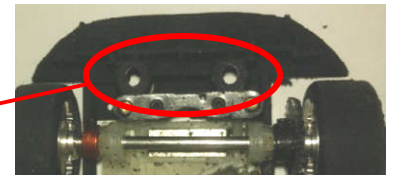
Chassis 3DP

Cars	Brand	References
Aston Martin GT3	Slot.it	S07-ST2 - STD/STD
Audi R8 GT3	Slot.it	S22-ST2 – STD/STD S22-ST4 – SSD/STD
BMW Z4 GT3*	Slot.it	S11-ST4 – SSD/STD
Mercedes AMG GT3	Slot.it Slot.it Prospeed	S23-ST2-STD/STD S23-ST4-SSD/STD PSSX00101
Porsche 991 RSR*	Slot.it	S18-ST2 – STD/STD S18-ST4 – SSD/STD

* PCR chassis available and authorized.

Exceptions

- A 2mm spacer can be placed between the chassis and the body. Only for PCR chassis and on the Audi R8 chassis.
- The S**-ST4-SSD/STD chassis for the Porsche 991 RSR, the Audi R8 and the Mercedes AMG are also accepted as long as the hole for the SSD chips is covered by the chip cover.
- On the Audi chassis: a slight sanding at the level of the rear screws holdings for the bodywork is accepted, to allow a better integration of the suspension.



MOTOR MOUNT AND BUSHINGS

- Motor mount angiewinder 1 mm offset (CH74, CH82)
- It is allowed to let move the motor mount in the chassis.
- The screws are free. No washers.
- The centering ring of the motor can be glued.
- It is allowed to place 1 ballast (SP23) in the appropriate housings on the motor mount. **Maximum 2 ballasts.**
- Gluing the spherical bushings **is not allowed. Bearings are not allowed.**
- It is allowed to cut off the side pins of the motor mounts.



SUSPENSION

- Suspension kits Slot.it(CH47B,CH09)are only allowed at the rear.
- All kinds of Slot.it springs and magnets, as well as the other Slot.it parts intended for the suspensions are allowed.
- Screws are free.

MOTOR

- Slot.itflat-6(MN09CH –yellow motor)with the case opening facing up. The motor is provided by the organization. .
- The motor must be fixed to his mount with 1 or 2 screws.
- It is allowed to place an adhesive tape or railing on the case opening.



CROWN AND PINION

- Slot.it anglewinder crowns. Number of teeth free.
- Slot.it pinions (bronze or ergal) with a diameter of 6,5 mm. 11 or 12 teeth.

FRONT WHEEL-AXLE UNIT

- The max. width with the tires mounted cannot exceed the width of the body at the wheel arch.
- Slot.it wheels of diameter 17,3mm with hubs (same hubs on both wheels).
- Slot.it axle, diameter 3/32".
- Washers or rings can be inserted between the chassis and the wheels.
- Only Slot.it PT15 tires are allowed. They are not modified and not varnished.

REAR WHEEL-AXLE UNIT

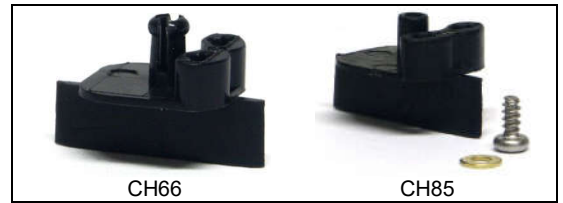
- The max. width with the tires mounted cannot exceed the width of the body at the wheel arch.
- Slot.it metal wheels (aluminum or magnesium) of a diameter of 17,3mm with hubs(same hubs on both wheels). The wheels cannot be painted.
- Slot.it axle, diameter 3/32".
- Stoppers are allowed.
- Washers can be inserted on the rear axle.
- Slot.it tires PT1207F22 supplied by the organization.

Exceptions

BMW Z4 : wheels with a diameter of 16,5 ou 17,3mm

PICKUP, BRAIDS AND WIRES

- Slot.it pickup CH66 or CH85.
- The pickup **cannot be modified**
- Braids free
- Spacer between the pickup and the chassis allowed.
- The wiring of the pickup is free but must be made only with thin wire.
- Connectors can be fixed on the wires connecting the motor to the pickup.
- Screw for the pickup is free.



LIGHTING

- Lighting kit Slot.it SP16C or ZMachine.
- It is allowed to place a micro switch to switch on/off the lights.
- Brand and led type are free.
- White, Xenon and yellow LED lights are allowed. Only one color for both front lights.
- Red LED light only for the back of the car.
- Intensity and color is the same for both lights. The intensity test will be checked at the technical scrutineering.
- It is not allowed to separate the capacitor from the electronic chip and both must be fixed between the body and the chassis.
- Lighting kit with exhaust lights is allowed. Lights must be placed at the exhaust spot in the car.
- Lighting kit with 'STOP' or 'WARNING' lights are allowed.

SPARE PARTS

(Below the maximum number of spare parts that can be used during the race)

The spare parts must be showed at the technical scrutineering.

- 2 chassis (wiring mounted)
- 3 pickups
- 2 motor mounts with bushings
- 2 lighting kits
- 2 suspension kits
- 2 sets of front tires
- 4 crowns
- 6 rear wheels
- 3 pinions
- 4 front wheels
- 4 axles
- stoppers, screws, washers, ...

Chassis mounted with de front axle screws, wiring, connectors, and motor mount with suspension.